

# Guardian OLP

## OFFLINE PROOFING SYSTEM



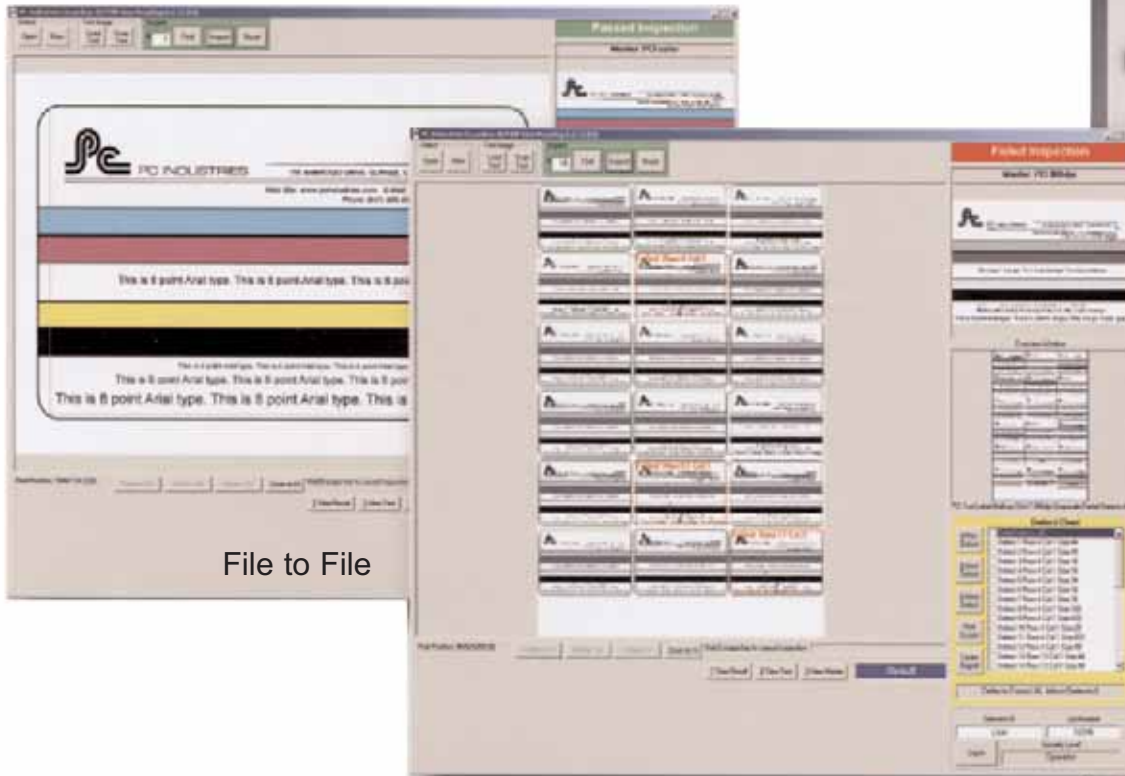
The Guardian Print Proofing System™ can automatically find and highlight differences in print quality from an approved master image. The Guardian Proofing System can compare a one-up electronic file or scan to a multi-up electronic file or scan. This feature will detect typical printing defects such as missing or extra print, pre-press errors, plate defects and color variations.



**AAA Press International, Inc.**

3160 N. Kennicott Avenue ■ Arlington Heights, IL60004 ■ <http://www.aaapress.com> ■ [info@aaapress.com](mailto:info@aaapress.com)  
US & CAN Phone 800.678.7222 Fax 800.678.7983 ■ INT. Phone 847.818.1100 Fax 847.818.0071

## INTERFACE



## DETECT ERRORS...

- Initiated during PDF artwork
- Introduced during pre-press step and repeat process
- Created during raster image processing (RIP)
- Produced during the plate-making process
- Caused by incorrectly mounting printing plates
- Created during plate washing
- Due to press accuracy
- Related to press operation error
- Before producing costly scrap material
- Prior to shipping defective product with potential liability

## TYPES OF DEFECTS DETECTED:

- Missing, filled-in and broken text
- Print and die mis-register
- Font substitution
- Incorrect copy spacing and position
- Defects in graphics area: logos, vignettes and process printing
- Color variation
- Ink spots, smears and streaks
- Incorrect or poor quality bar codes

## EASY TO USE



### LOAD

### SCAN

### INSPECT



File to File



File to Scan



Scan to Scan

## SECURE

3 levels of security restrict unauthorized access to secure documents and sensitivity setting. Data files are password protected using 256-bit encryption.

## ACCURATE

The Guardian OLP is capable of detecting a missing period down to a 3-point font

## FAST

The defect chart “quick zooms” instantly to the color-coded defect.

When a defect is detected the operator can flip to the master image to compare the differences detected.

## ADVANCED

- Verify against customer-approved artwork
- Object-based inspection
- Auto image alignment
- Auto skew correction
- Auto image find
- Optical character recognition (OCR)
- Usable with any fonts
- Negative image for film and plate inspection
- ANSI / ISO bar code grading option
- Fold and crease correction
- Compares different size artworks
- 21 CFR part 11 compliant options
- Integrates with PCI 100% Inspection Systems
- Hand-held bar code reader job entry option
- Remote technical support and training



## AUDIT TRAIL

Full reporting and documentation; Roll label printer option; Defect classification

## SPECIFICATIONS

<b>Operating System</b>	Windows XP Professional
<b>Computer</b>	High-performance industrial computer suitable for production environments
<b>Remote Support Access</b>	Via Internet or modem
<b>Inspection Speed</b>	10 to 90 sec depending on resolution and size
<b>Minimum Defect Size</b>	.002" (0.05 mm)
<b>Maximum Resolution</b>	1,200 dpi
<b>Master File Formats</b>	PDF, TIF, BMP, EPS, PS
<b>Fonts</b>	Compatible with all fonts and foreign languages
<b>Maximum Number Multi-up Images</b>	200 per inspection
<b>Scanner Material Types</b>	Paper, film, carton, labels, plates
<b>Power Supply</b>	100-240VAC, 50-60HZ
<b>Options</b>	Mobile cart, report printer, roll label printer, bar code scanner, ANSI grading module

## SCANNER OPTIONS



### OPTION 1

Size: 8.5" x 11.7"  
(A4) 210 x 297 mm



### OPTION 2

Size: 12" x 17"  
(A3) 297 x 410 mm



### OPTION 3

Size: 42" x Infinite  
(A0) 1066 x Infinite



**AAA Press International, Inc.**

3160 N. Kennicott Avenue  
Arlington Heights, IL60004  
Web Site: <http://www.aaapress.com>  
E-mail: [info@aaapress.com](mailto:info@aaapress.com)

US & Canada:  
Phone 800.678.7222 Fax 800.678.7983  
International:  
Phone 847.818.1100 Fax 847.818.0071