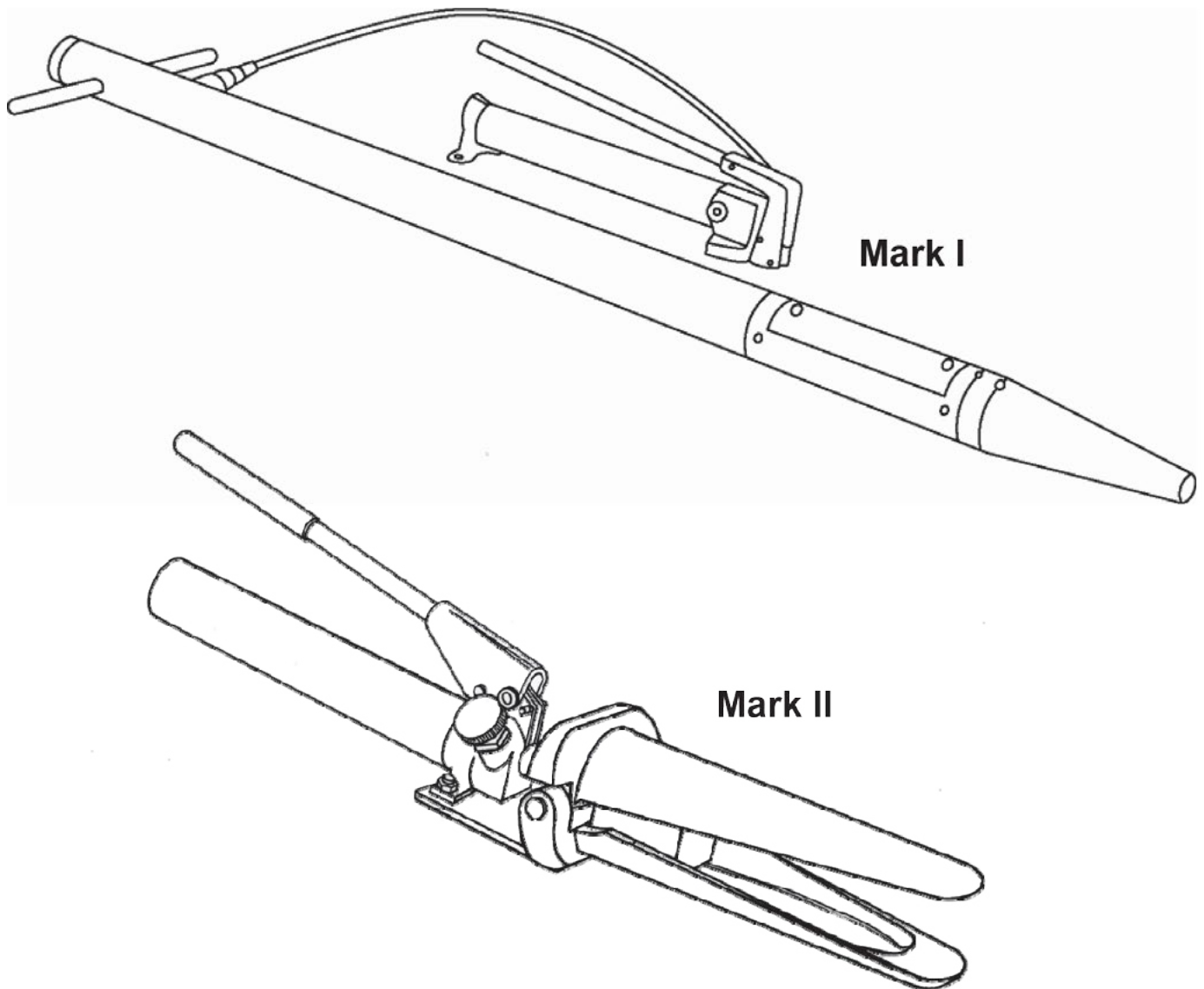


# Crushed Roll Core Savers

## Mark I & Mark II - Operations Manual



Sold and distributed by



**AAA Press International, Inc.**

3166 N. Kennicott Ave. ■ Arlington Heights, IL 60004 ■ [www.aaapress.com](http://www.aaapress.com) ■ [info@aaapress.com](mailto:info@aaapress.com)

US & CAN Phone 800.678.7222 Fax 800.678.7983 ■ INT. Phone +1 847.818.1100 Fax +1 847.818.0071

# TABLE OF CONTENTS

RECOMMENDED TOOLS .....	3
MARK I ADAPTER KITS .....	3
MARK II ROLL SAVER .....	4
Parts identification .....	4
Setup .....	4
Operation .....	4
MARK II ROLL SAVER .....	5
Parts identification .....	5
Operation .....	5
MARK I ADAPTERS .....	6
Installation .....	6-7
TROUBLESHOOTING .....	8
SPARE PARTS .....	8
SPECIFICATIONS .....	9

## Caution

- Keep hands clear of pinch points!



- Follow safety procedures as outlined for use with hydraulic equipment.
- Do not use lubricants during maintenance of this product. Lubrication will cause contamination by accumulation of dust or debris in the moving parts.
- Unit repair procedures are not covered in this document. If this product cannot be made operational with the use of these instructions, contact AAA Press International, Inc.

Sold and distributed by



**AAA Press International, Inc.**

3166 N. Kennicott Ave. ■ Arlington Heights, IL 60004 ■ [www.aaapress.com](http://www.aaapress.com) ■ [info@aaapress.com](mailto:info@aaapress.com)

US & CAN Phone 800.678.7222 Fax 800.678.7983 ■ INT. Phone +1 847.818.1100 Fax +1 847.818.0071

## Recommended Tools

- Mark I Hex drive wrenches: 4, 5, 6 and 8 mm Spanner wrench for use with the Mark I adapter: Part No. 772945 (provided in adapter kits)
- Mark II None

Also available for use with the Mark I Roll Saver: Sledge Weight (Part No. 133144)

This 9kg/20 lb sledge weight is a useful tool for driving the Mark I into difficult cores – simpler and safer than any type of sledgehammer.

## Mark I Adapter Kits

Adapter kits include nose cone, adapter leaf, necessary hardware, and a spanner wrench.

Installation instructions are on page 6.

Core diameter		Kit number
mm	inches	
70-76	2.75-3.00	no adapter required
102	4.00	700026
127	5.00	700034
152	6.00	129871
152	6.75	522363

Sold and distributed by



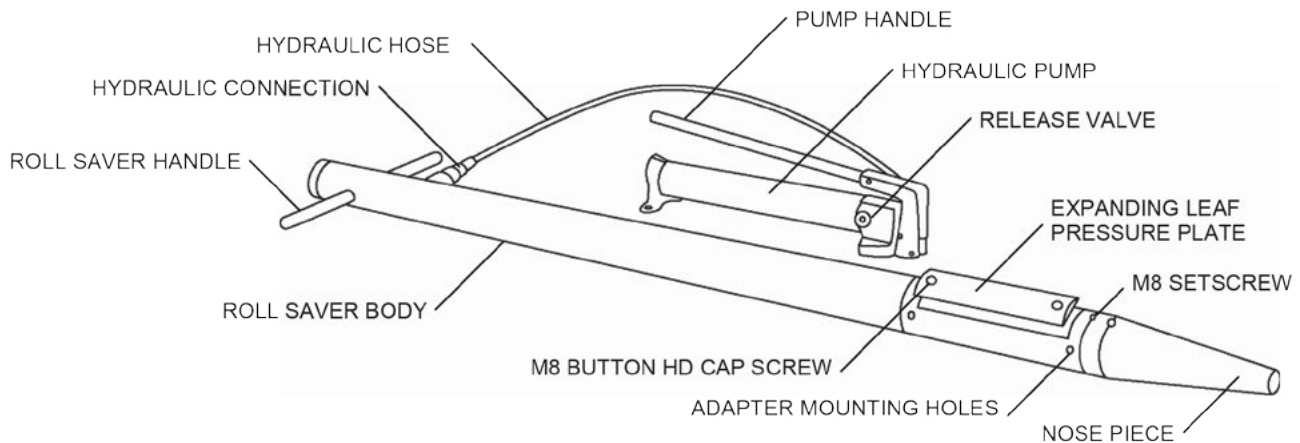
**AAA Press International, Inc.**

3166 N. Kennicott Ave. ■ Arlington Heights, IL 60004 ■ [www.aaapress.com](http://www.aaapress.com) ■ [info@aaapress.com](mailto:info@aaapress.com)

US & CAN Phone 800.678.7222 Fax 800.678.7983 ■ INT. Phone +1 847.818.1100 Fax +1 847.818.0071

# MARK I ROLL SAVER

## Parts Identification



## Setup

Connect the hydraulic pump hose to the Roll Saver body.

## Operation

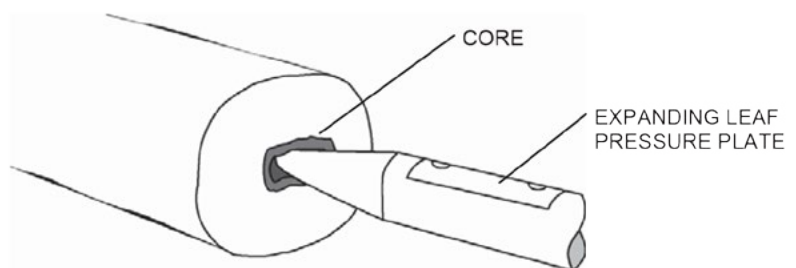
1. Place the roll on its side.
2. Ease the Roll Saver into the crushed core, ensuring that the pressure plate is located to open against the crushed core area.
3. Operate the hydraulic pump using the pump handle. The pressure plate will expand outward inside the core.
4. Open the release valve on the hydraulic pump to relieve the pressure, then reposition the nose piece, if necessary, further into the core.

**Note:** Drive into core using sledge weight if necessary (see Spare Parts, page 8)

5. Repeat steps 3-4 until the roll is completely restored.

**Note:** It is important to periodically “shock-set” the roll. While the pressure plate is expanded inside the core, strike the roll hard along the roll circumference with a mallet or heavy stick to release the internal stresses.

6. When the roll is restored, open the release valve on the Roll Saver, relieve the pressure and remove the Roll Saver from the core.



Sold and distributed by



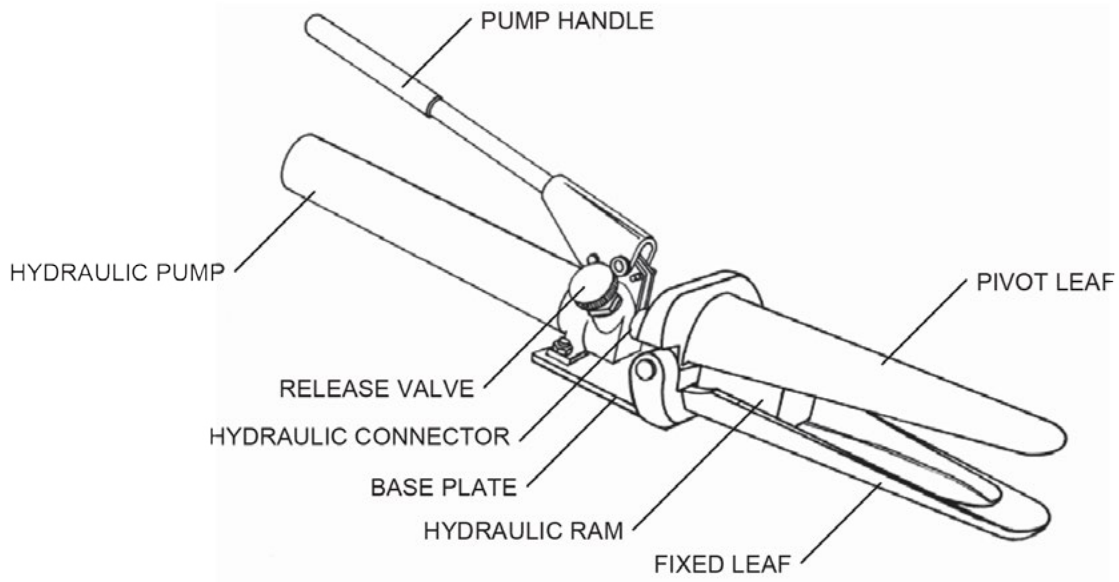
**AAA Press International, Inc.**

3166 N. Kennicott Ave. ■ Arlington Heights, IL 60004 ■ [www.aaapress.com](http://www.aaapress.com) ■ [info@aaapress.com](mailto:info@aaapress.com)

US & CAN Phone 800.678.7222 Fax 800.678.7983 ■ INT. Phone +1 847.818.1100 Fax +1 847.818.0071

# MARK II ROLL SAVER

## Parts Identification



## Operation

1. To ease the Roll Saver into the crushed roll
2. With jaw leaves closed, close the release valve on the hydraulic pump.
3. Position the jaws as far as they will go into the crushed roll.
4. Pump the handle until the jaws open.
5. Open the release valve to close the jaws.
6. Repeat steps 1-4 until the Roll Saver is completely inside the crushed roll.
7. With the jaws closed, rotate the Roll Saver so the jaws push out in the direction of the maximum crush.

**Note:** It is important to periodically shock-set the roll. While the pressure plate is expanded inside the core, strike the roll hard along the roll circumference with a mallet or heavy stick to release the internal stresses.

8. When the roll is restored, open the release valve on the Roll Saver to close the jaws.
9. Remove the Roll Saver from the core.

Sold and distributed by



**AAA Press International, Inc.**

3166 N. Kennicott Ave. ■ Arlington Heights, IL 60004 ■ [www.aaapress.com](http://www.aaapress.com) ■ [info@aaapress.com](mailto:info@aaapress.com)  
US & CAN Phone 800.678.7222 Fax 800.678.7983 ■ INT. Phone +1 847.818.1100 Fax +1 847.818.0071

# MARK I ADAPTER

## For Adaptation to 4", 5" or 6' Cores

### BEFORE INSTALLING ADAPTER

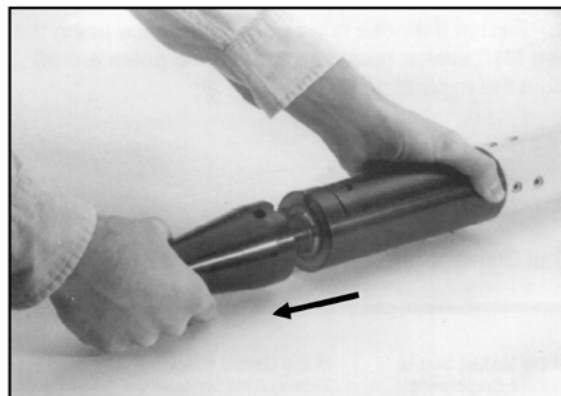
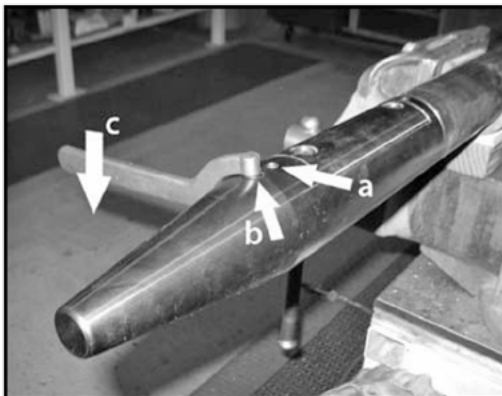
Disconnect the hydraulic pump from the Roll Saver body. Remove the stock nose piece and expanding leaf pressure plate components.

### Installing the Adapter

#### Remove the stock nose piece

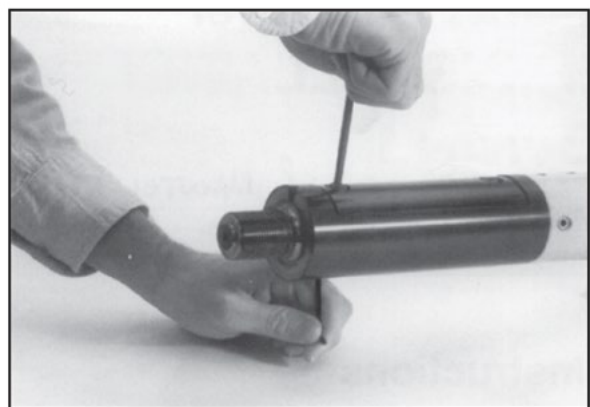
1. Remove the M8 setscrew (a) from the Roll Saver nose piece.
2. Using the spanner wrench provided in your adapter kit, unscrew the nose piece from the Roll Saver body. Insert wrench pin as shown and push handle down to turn the nose piece in the counterclockwise direction.
3. Pull the nose piece off of the body.

#### Remove the stock leaf pressure plate



4. Remove the expanding leaf pressure plate from the body by removing the two M8 button head cap screws.

**Note:** The screws are threaded into guide bolts in the Roll Saver body. There is a slot in the guide bolt head with corresponding holes on the underside of the body. To keep the guide bolt from rotating while removing the screw, insert a pin or rod into its corresponding hole, making sure that the pin seats into the slot in the guide bolt.



5. After removing stock leaf pressure plate and nose piece, slide the adapter onto the Roll Saver body.

Sold and distributed by

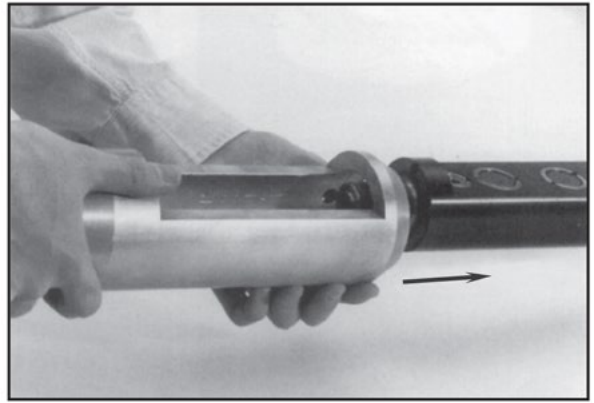


**AAA Press International, Inc.**

3166 N. Kennicott Ave. ■ Arlington Heights, IL 60004 ■ [www.aaapress.com](http://www.aaapress.com) ■ [info@aaapress.com](mailto:info@aaapress.com)

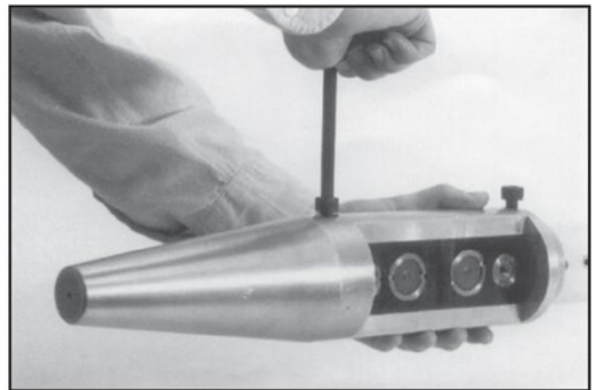
US & CAN Phone 800.678.7222 Fax 800.678.7983 ■ INT. Phone +1 847.818.1100 Fax +1 847.818.0071

- Align the adapter on the Roll Saver body so that the pistons, facing upward, show through the slot in the adapter.

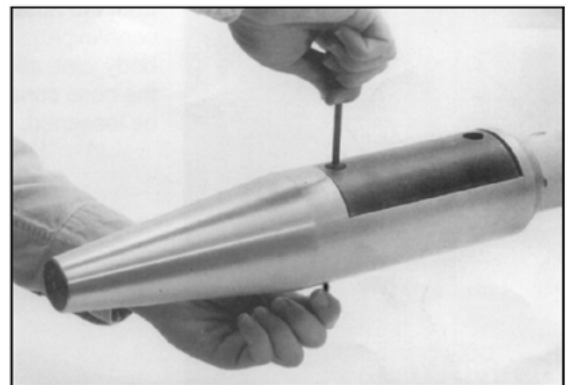


- Fasten the adapter to the Roll Saver body with M10 socket head cap screws (supplied with adapter) as shown.

**Note:** The 4 inch adapter is supplied with M10 button head cap screws.



- Fasten the adapter expanding leaf pressure plate to the Roll Saver body guide bolts using M8 socket head cap screws (supplied with adapter). Insert the pin in the corresponding hole to prevent the guide bolts from turning while bolts are tightened.



Sold and distributed by



**AAA Press International, Inc.**

3166 N. Kennicott Ave. ■ Arlington Heights, IL 60004 ■ [www.aaapress.com](http://www.aaapress.com) ■ [info@aaapress.com](mailto:info@aaapress.com)

US & CAN Phone 800.678.7222 Fax 800.678.7983 ■ INT. Phone +1 847.818.1100 Fax +1 847.818.0071

# Troubleshooting

<b>Problem</b>	<b>Possible cause</b>	<b>Recommended solution</b>	<b>Pages</b>
Mark I adapter will not fit onto Roll Saver body	Stock nose piece not removed	Remove stock nose piece	6
Cannot install Mark I adapter pressure plate leaf	Stock leaf not removed	Remove stock leaf	6
Mark I pressure plate does not expand	Hydraulics not connected	Connect hydraulic pump to Roll Saver body	4
Mark II jaws do not open	Release valve open	Close release valve	5

## Spare Parts

The metric hardware is listed here for reference.

Call AAA Press International, Inc. Customer Service for assistance with replacement parts.

<b>Description</b>	<b>Part number</b>
Mark I Roll Saver	700042
M8 X 1.25 X 8 LG – Setscrew Knurl Cup Pt	-
M8 X 1.25 X 25 LG – Button Hd Cap Screw	-
Guide Bolt	700006
Mark I Hydraulic Hand Pump	700013
Sledge Weight	133144
Mark I Adapter – 4”	700026
M8 x 1.25 x 35 LG – Soc Hd Cap Screw	-
M10 x 1.50 x 16 LG – Btn Hd Cap Screw	-
Mark I Adapter – 5”	700034
M8 x 1.25 x 45 LG – Soc Hd Cap Screw	-
M10 x 1.50 x 20 LG – Soc Hd Cap Screw	-
Mark I Adapter – 6”	129871
M8 x 1.25 x 50 LG – Soc Hd Cap Screw	-
M10 x 1.50 x 30 LG – Soc Hd Cap Screw	-
Mark II Roll Saver	700066
Mark II Roll Saver Repair Kit	126627
Spanner Wrench (included with adapter kits)	772945

Sold and distributed by



**AAA Press International, Inc.**

3166 N. Kennicott Ave. ■ Arlington Heights, IL 60004 ■ [www.aaapress.com](http://www.aaapress.com) ■ [info@aaapress.com](mailto:info@aaapress.com)

US & CAN Phone 800.678.7222 Fax 800.678.7983 ■ INT. Phone +1 847.818.1100 Fax +1 847.818.0071



## Specifications

	Mark I Roll Saver		Mark II Roll Saver	
Core ID	70-76 mm	2.75-3.00 inches	70-76 mm	2.75-3.00 inches
Penetration	*915 mm	*36 inches	250 mm	10 inches
Weight (body only)	17 kg	37 lbs	N/A	N/A
Weight (with pump)	26 kg	57 lbs	9 kg	19 lbs
Hydraulic pressure	700 bar	10,150 psi	621 bar	9,000 psi
For roll diameters up to	1.8 m	70 inches	1025 mm diameter, 902 mm width	45 inch diameter, 36 inch width
Expansion	Approximately 1/4 inch above nominal core			

Sold and distributed by



**AAA Press International, Inc.**

3166 N. Kennicott Ave. ■ Arlington Heights, IL 60004 ■ [www.aaapress.com](http://www.aaapress.com) ■ [info@aaapress.com](mailto:info@aaapress.com)

US & CAN Phone 800.678.7222 Fax 800.678.7983 ■ INT. Phone +1 847.818.1100 Fax +1 847.818.0071